

**DOUGLAS NORTH BYE-ELECTION**  
**21<sup>st</sup> MAY 2015**

**VOTE MAIRE BOOTH**



**VOTE FOR CHANGE**

**FAIRNESS • EQUALITY**  
**RESPONSIBILITY**

**VOTE FOR A**  
**FAIRER FUTURE**

Bringing Politics back to the People

# VOTE MAIRE BOOTH

## MESSAGE FROM MAIRE BOOTH

Hello, I'm Maire Booth and I'm asking you to vote for me on the 21st May.

I'm 38 years old and was born in Northern Ireland and I have lived on the Island for the last 12 years . I currently work in the shipping industry, but throughout my professional life I have worked in hospitality, customer care and the film industries. I have a degree from Queens University Belfast in Political Science.

For the last four years I have lived in Douglas North (Governors Hill) with my Husband Jason and our 4 year old son Brendan, and have seen and experienced the issues facing us all.

One of the things I find special about Douglas North is the sense of community that we have surrounding us. I want to expand and grow this, we are all neighbours after all.

I want to keep and maintain the existing amenities and help make them the best they can be for the whole district as well as creating new opportunities for the younger generation. I'm aware that there are not enough facilities for young people and this has cultivated an element of anti-social behaviour. With more facilities and opportunities this behaviour should dissipate.

We need to get the authorities to take pride in the area - The road markings to be repainted, the hedges and verges to be well maintained. I am a strong believer that if we look after the community then the community spirit will grow stronger.

I have spent the last few weeks meeting as many of you as I can, it's been a pleasure to be welcomed so warmly and for this I say thank you. Many issues have been discussed but time and time again the same concerns come to the surface. Mainly that there is a lack of trust and confidence in the current administration and that things need to change. With your help we can bring about that change together. The current spate of over-spending, stealth taxes and cost of living increases need to stop. We are all being squeezed at an unacceptable rate and after all how can the economy grow when we have less of our disposable income to spend?

I'm just like you, I just want the best for my family.

Thank you for taking the time to read this introduction and remember to vote Maire Booth on May 21st.



# VOTE MAIRE BOOTH

## SUSTAINING ECONOMIC GROWTH

We mean business. We believe that the role of government is to create the right environment to allow businesses to grow and to promote, not just regulate, private enterprise. A LibVan government will work with the private sector to sustain growth and maintain confidence and investment despite the restraint on government finances. The political, social and cultural foundation of the Isle of Man should be a vibrant and diverse economy where all are given an equal opportunity to prosper.

- Government strategy must meet the needs of the entire business community, both large enterprise and small
- Ensure that the Island's infrastructure serves the strategic goals of the Island
- Explore the development of a privately funded deep water linkspan to encourage competition in sea freight, transport and attract cruise liners
- Reintroduce incentives such as our previous policy on national insurance holidays
- Support and continue with the successful financial assistance schemes currently in place which have helped strengthen many local businesses
- Review the planning system to ensure it is agile and responsive
- A fully open and transparent tender process
- We have much to offer by way of niche tourism but more can be done to promote and further develop our unique offerings
- We have high quality local produce but there is a need for greater awareness of our products both on the Island and wider afield



# VOTE MAIRE BOOTH

## HEALTH AND SOCIAL CARE

The Island's health system must stay free of charge at the point of delivery and has to be capable of meeting the needs of all residents.

- Protect frontline staff and services
- Implement the recommendations of the West Midlands Quality Review reports
- Appoint an independent regulator to ensure compliance with best practice
- Publish a list of all consultants, their qualifications and waiting times
- Promote through education and encouragement healthier lifestyle choices for all Island residents
- Create a working party to develop an effective first class dental health care policy and system
- Define and eliminate fuel poverty



## OUR ELDERLY

Our elderly citizens should be respected and afforded all that they need to continue to enjoy a high quality of life.

- Assistance to remain in their own homes and maintain their independence
- Flexible personal care and support budget to enhance choice
- Investigate a broad based system of support for family members who care for dependent relatives
- Ensure that the basic pension is sufficient to provide an acceptable standard of living
- Co-operate with the third sector to ensure that there are sufficient opportunities to prevent social isolation



**Bringing Politics back to the People**

# VOTE MAIRE BOOTH

## REFORM AND IMPROVED GOVERNANCE

The case for improved governance in our institutions has never been stronger. Such changes in the policies, procedures and operation of government is at the cornerstone of LibVan's undertaking to the people of the Island.

- Create a publicly elected Legislative Council so that laws are made by people who are accountable to the public
- Ensure that the Chief Minister has a public mandate
- Require all candidates for the position of Chief Minister to publish a programme for government
- Restrict collective responsibility to Ministers and then only to the policies stated in the programme of government
- Abolish the supplement paid to Tynwald members for memberships of departments and statutory boards
- Appoint the already approved Tynwald Auditor and an independent Ombudsman
- Create a meaningful Freedom of Information Act
- Remove commercial confidentiality clauses within government contracts unless there is a proven need.

## TAXATION AND WELFARE

We live in a global market and we need a sustainable and competitive taxation strategy to attract individuals and companies to relocate to, and operate from, the Island while remaining fair to all.

- Set up a Tax and Welfare Commission to review the present regimes and make recommendations
- Taxation and welfare system must be thoroughly integrated
- Phase out the existing public sector pension scheme whilst protecting benefits accrued to date and identified key sector workers such as medical professionals
- A fair method of means testing benefits
- Support recent budget announcements to increase the personal allowance

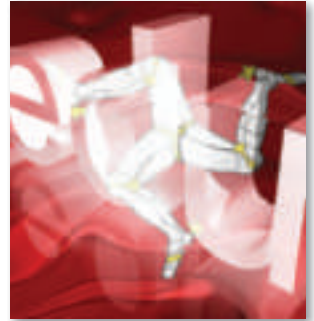


# VOTE MAIRE BOOTH

## EDUCATION

Investing in our young people has to be the best investment that we can make and all should be provided with the opportunity and encouraged to meet their full potential.

- Introduce a university grant system based on achievement
- Expand financial assistance for further education and apprenticeships
- Protect frontline teaching
- Ensure all class sizes are appropriate
- Give more decision making powers to head teachers
- Invest in technology to broaden choice and improve efficiency in education provision
- Reintroduce tax relief on educational covenants



## OUR NATURAL RESOURCES

We are fortunate that our beautiful Island has wonderful natural resources and whilst these need to be protected they should also be used as a means of economic and social growth.

- Energy generation should be clean, sustainable and any excess used for revenue generation.
- Require Manx Utilities to pay a reasonable amount for micro generated electricity.
- Negotiate with the United Kingdom to put an Exclusive Economic Zone in place.  
*(The median line between our coast and our neighbours)*
- Effectively promote our already high standards of animal welfare
- Continue working towards making the Isle of Man the worlds first biosphere nation



**Bringing Politics back to the People**

# VOTE MAIRE BOOTH

## LAW AND ORDER

We are lucky to live on an island with such low crime but this is currently being undermined by the financial cut-backs. We need to recognise that law and order is not just vital to our quality of life but also has a major impact on the economy by encouraging businesses to relocate here.

The safeguarding of life and property has to be paramount but more effective ways of rehabilitation and dispute resolution are needed.

- Instigate an independent penal review
- A concerning number of those given a prison sentence have committed an alcohol related crime. Consideration needs to be given to weekend prison sentences which allow the offender to continue in employment whilst restricting their freedom
- A high percentage of those in prison have mental health issues and need help rather than incarceration
- Mediation should always be a first step in dispute resolution. A LibVan Government would assist in establishing an independent mediation centre
- Prioritise the reduction in domestic abuse and take steps to ensure that all victims are able to feel safe

## USE YOUR VOTE WISELY - VOTE FOR CHANGE VOTE MAIRE BOOTH

If you support these policies by voting for Maire you will know that they have at least two other MHKs in the House of Keys and Tynwald who support them as well. This is something that no independent politician can offer.

Maire will be happy to discuss these policies in more detail if you wish and her contact details are :

Phone number: 07624 417486

Address: 39 Campion Way, Douglas IM2 7TD

Email: [maire.booth@libvan.com](mailto:maire.booth@libvan.com)



# LibVan Manifesto

## LIBVAN MHK's

### Kate Beecroft - Party Leader, MHK for Douglas South

As Leader of the Liberal Vannin Party, it really is my pleasure to ask you to vote for Maire Booth. She is an exceptional candidate who I know will serve you well and will be an asset to the whole of the Isle of Man.

Maire will not be an MHK that you only see every five years. Like other LibVan MHKs, she will be at our central branch meetings which are held on the second Wednesday of every month starting at 7.30 at Douglas Old Friends on Finch Road. These are open meetings, you do not need to be a party member and all are welcome.

Your vote is valuable so please use it wisely and vote for Maire.

Thank you.



### Peter Karran - Party Ard, MHK for Onchan

I am delighted that Maire has been selected to represent LibVan in the forthcoming bye-election.

The political system needs to change, LibVan is committed to ensuring that change happens and Maire is eager to help us to achieve that.

Maire will be part of a team with different experiences and attributes and by using them all we are stronger together.

This will enable us to introduce the good systems of governance that are badly needed in order that all sections of society have "the freedom to flourish".



# VOTE FOR CHANGE VOTE FOR MAIRE BOOTH

Bringing Politics back to the People